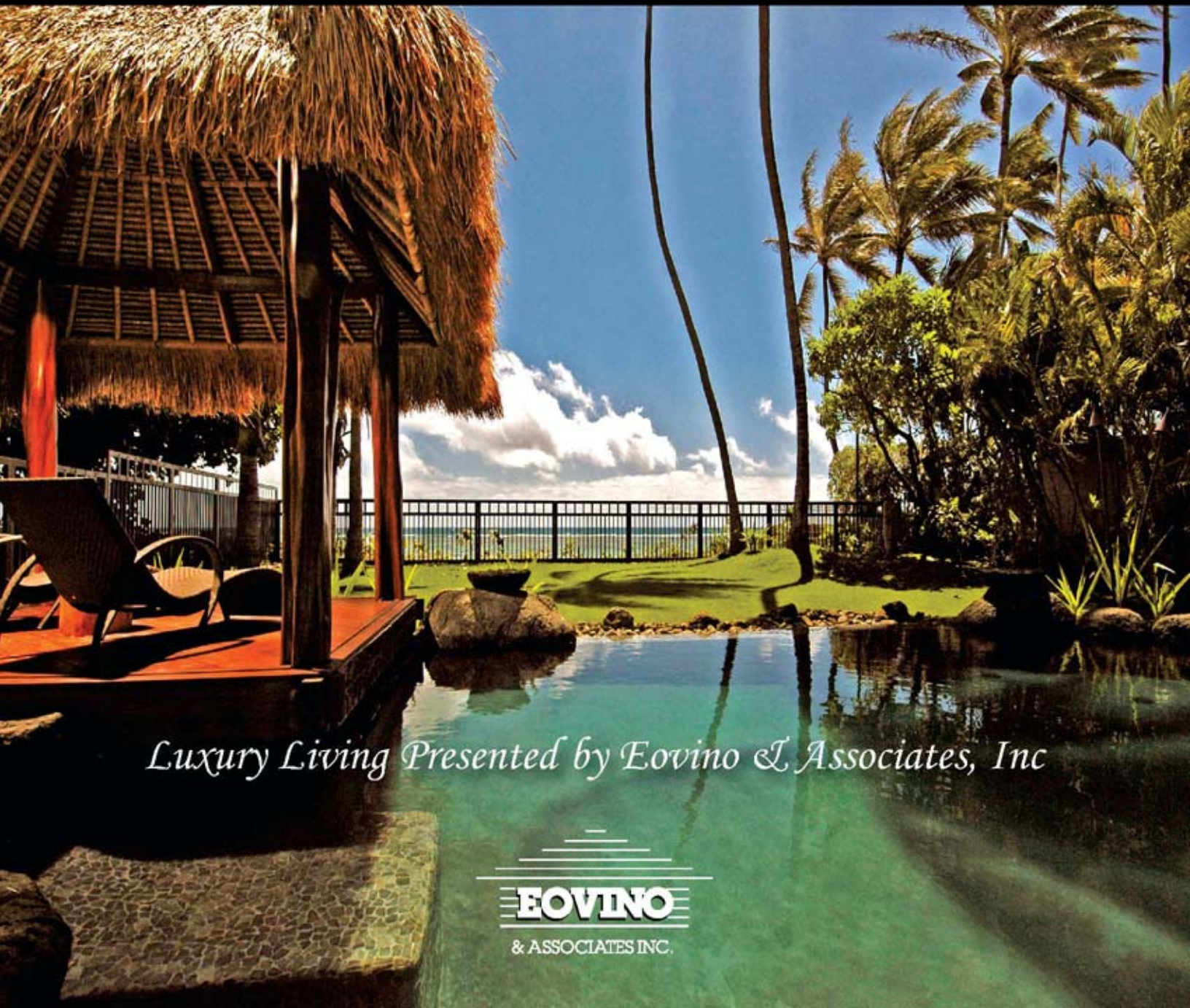


# *Kahala Beachfront Estate*



*Luxury Living Presented by Eovino & Associates, Inc*

**EOVINO**  
& ASSOCIATES INC.



Indoor-outdoor elegance awaits you at this new Kahala beachfront estate. This contemporary, island style property details exceptional design, including an Asian-themed entry pavilion lit up with fire pots and maid's quarters, and an elevated walkway over an ancient Indonesian geode water feature. The main house was built encompassing a mature Monkeypod tree, and contains an outdoor Bali shower and two garages. The formal entry hall opens up to a two-story living room which draws your eye down the hallway to the open ocean and beachfront. The dining room, kitchen, and family rooms are open-style, with pocket doors opening to the infinity pool and covered lanai. The pool area has tiki-torches, fire pots, Viking barbeque, beach access, and an authentic Bali Cabana and Spa. The upstairs master bedroom occupies the entire front area of second floor, and has spectacular views of the beach and Maunaloa Bay shoreline all the way down to Koko Head crater. This remarkable paradise is the only brand new beachfront estate available in the luxurious Honolulu neighborhood of Kahala.





  
**EOVINO**  
 & ASSOCIATES INC.

DONALD T. EOVIINO  
 REALTOR®, GRI, CRB, CRS  
 808-735-3066 DON@EOVINO.NET  
 WWW.EOVINO.NET

**FEATURES**

*Beach Frontage*  
**5 Bedrooms, 5½ Bath**  
*House Area:* **6,101 sf**  
*Covered Lanais:* **1,305 sf**  
*Entry Pavilion:* **302 sf**  
*Cabana:* **144 sf**  
*Garages:* **969 sf**  
*Total Built:* **8,821 sf**  
*Land Area:* **\*23,191 sf**

*Offered at:* **\$13,900,000 FS**

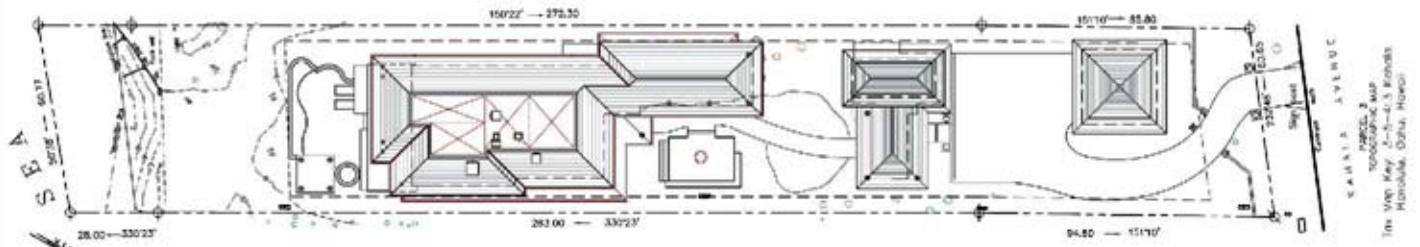
*Designer Furnishings & Artwork Avialable*

*\*Includes Beachfront*

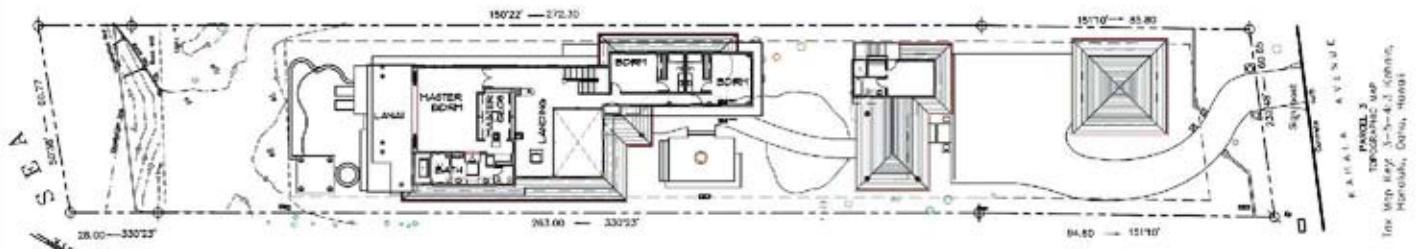


Additional information and photos at:  
[www.eovino.net](http://www.eovino.net)

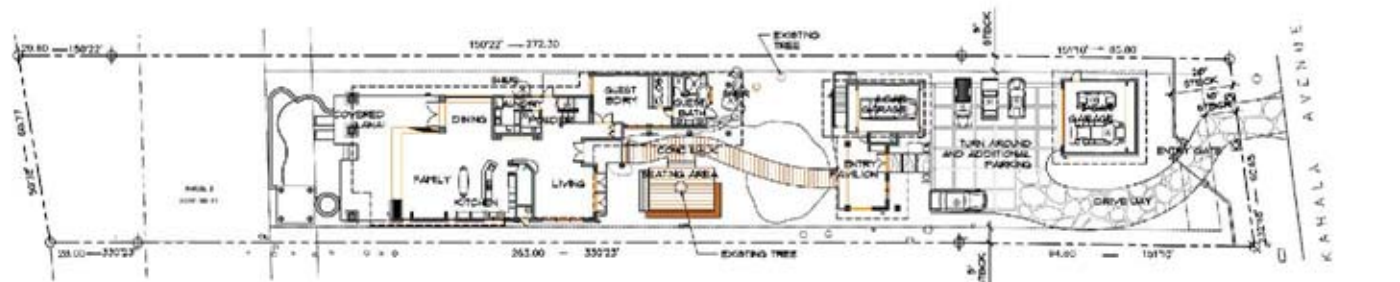
*Beachfront*  
*Luxury*



3 SITE PLAN WITH PROPOSED ROOF PLAN



2 SITE PLAN WITH UPPER LEVEL FLOOR PLAN



1 SITE PLAN WITH LOWER LEVEL FLOOR PLAN



& ASSOCIATES INC.

DONALD T. EOVIINO  
REALTOR®, GRI, CRB, CRS

808-735-3066 DON@EOVINO.NET

WWW.EOVINO.NET

Water Features - Billy Pulaski

Landscape Architect - Jonelle W. Oshiro

Landscape Architect - Hokuahi Lawns, Inc.

Interior Decorating - Hiroko Eovino & Dianne Wennick

Project Manager - Jimmy Davis

Architect - KE Design, Kris Eiserloh  
Design Concept - J.A. Schmidt  
Co-Developers - Donald T. Eovino & Larry Wennick  
Contractor - MAS Builders