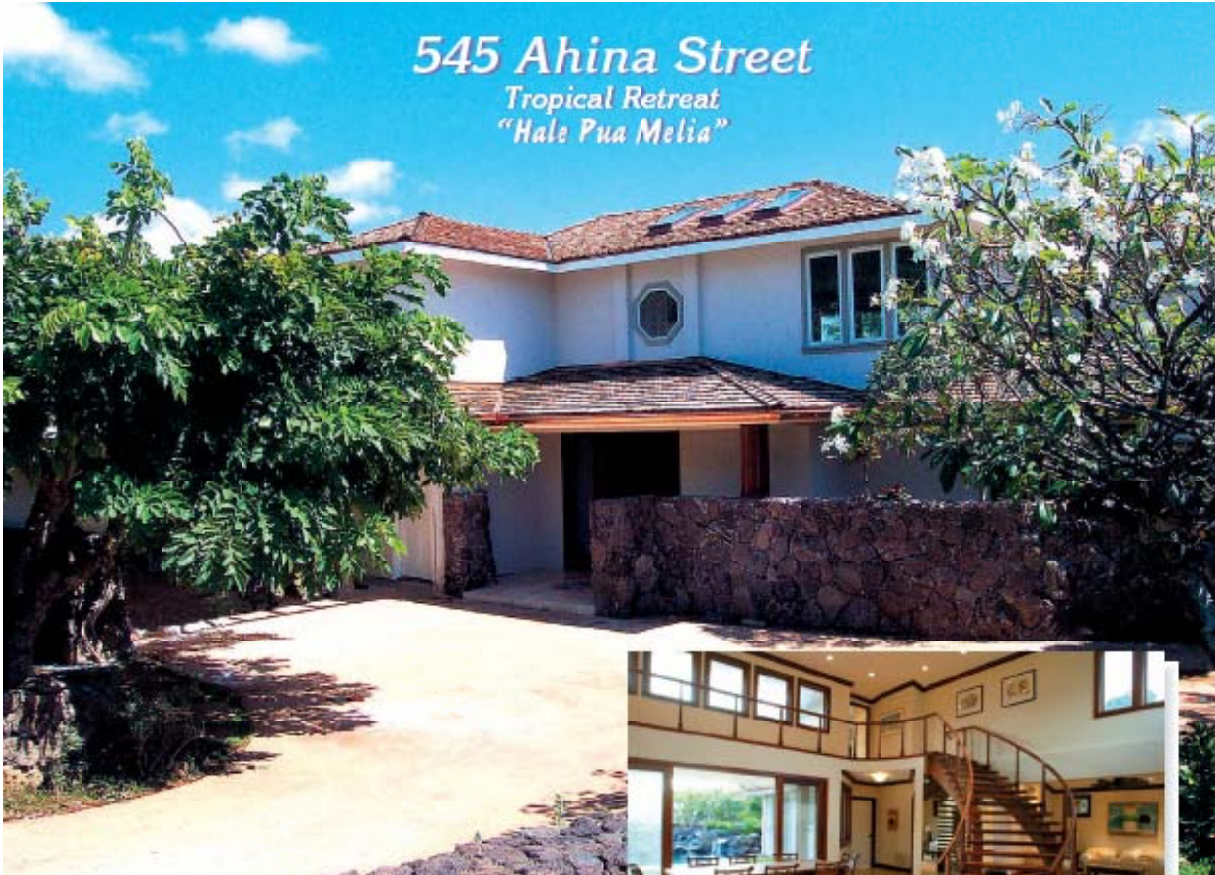


545 Ahina Street

Tropical Retreat
"Hale Pua Melia"



This retreat welcomes you with its entry screened by a decorative rock wall and tropical foliage. Immediately upon entering under the two story skylight foyer this spacious home with its large open areas that flow into each other offers a floating handcrafted staircase that frames an interior water feature and separates the foyer from the dining room. Outside, in the central courtyard, relax by the natural Lagoon Pool that features a waterfall and spa or dine on the patio terrace.

The second story master suite has a high vaulted ceiling with large walk-in closets and a private dressing area.

- 4 Bedrooms, 3.5 Baths
- Bonus (storage) Room
- Two Master Suites (First & Second Floors)
- Air Conditioning
- Land Area: 10,361 sq. ft. surrounded by a lava rock wall
- Interior Area: approx. 4,300 sq. ft.
- Covered Lanais: 510 sq. ft.
- Total Buildable Area: 4,600 sf
- Two car garage with extra parking space alongside of garage
- Double-shower with seven foot reclining bathtub
- Natural daylight with skylights throughout house
- Limestone entry with inserted plumeria design
- Limestone floors and custom wood trim crown molding and baseboards
- High vaulted ceilings
- Custom handcrafted Andiroba wood staircase
- Lagoon style pool and spa
- TMC: 1/3/5/14/32

Architecture by Vincent Paul Ponthieux, Envision Synergy, LLC
Interior Design by Maure Fujihira/Interior Design
Furniture, Art & Accessories by Carla Kirkeby
Construction by Kahala Construction



A hand crafted floating staircase made of South American Andiroba wood with Indonesian water vessel.



Lava rock "Grotto" pool with waterfall and spill-over spa.

Offered at \$2,350,000

Donald T. Eoetno
R, CRS, CRS, GRI
Listor/part owner
808-735-3066
www.eoetno.net

